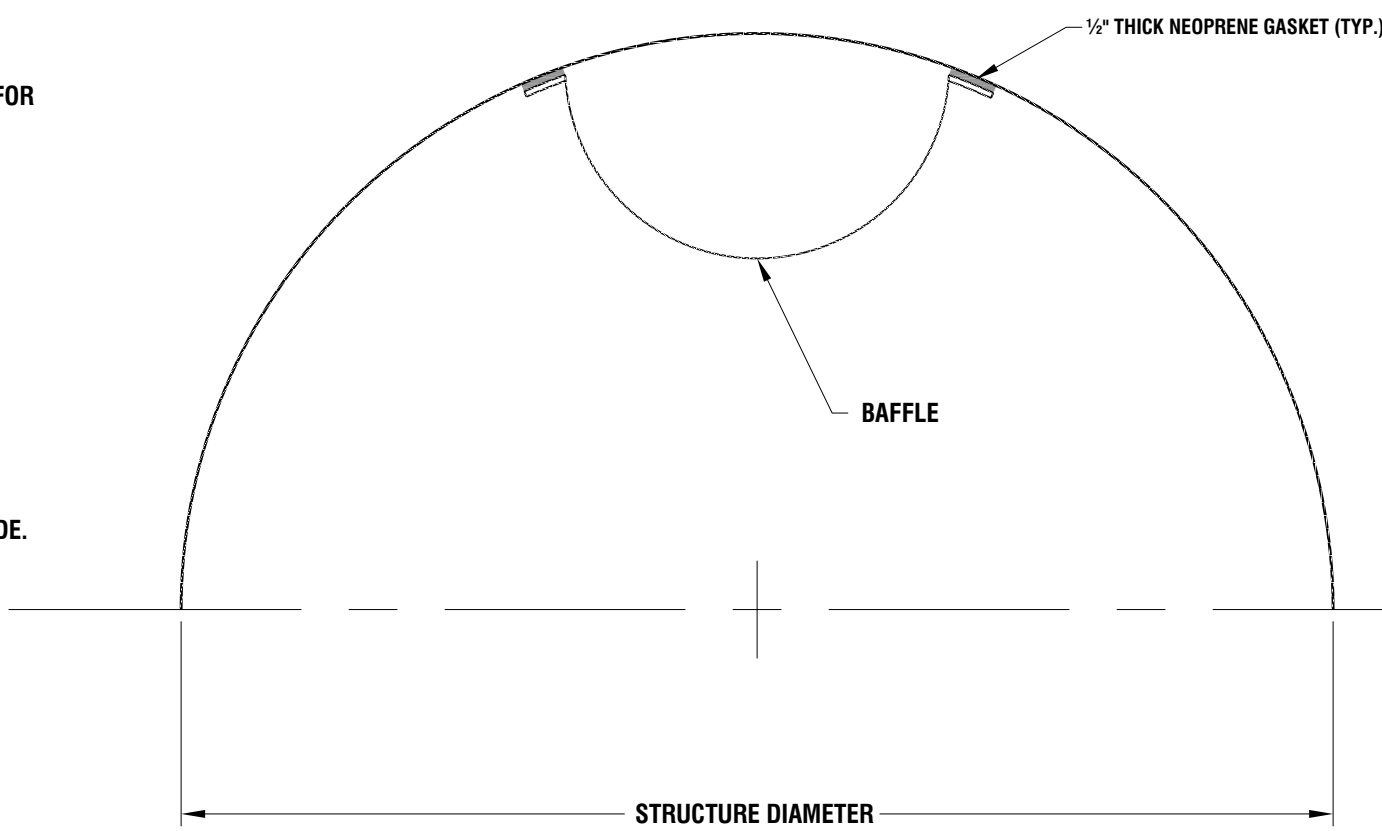
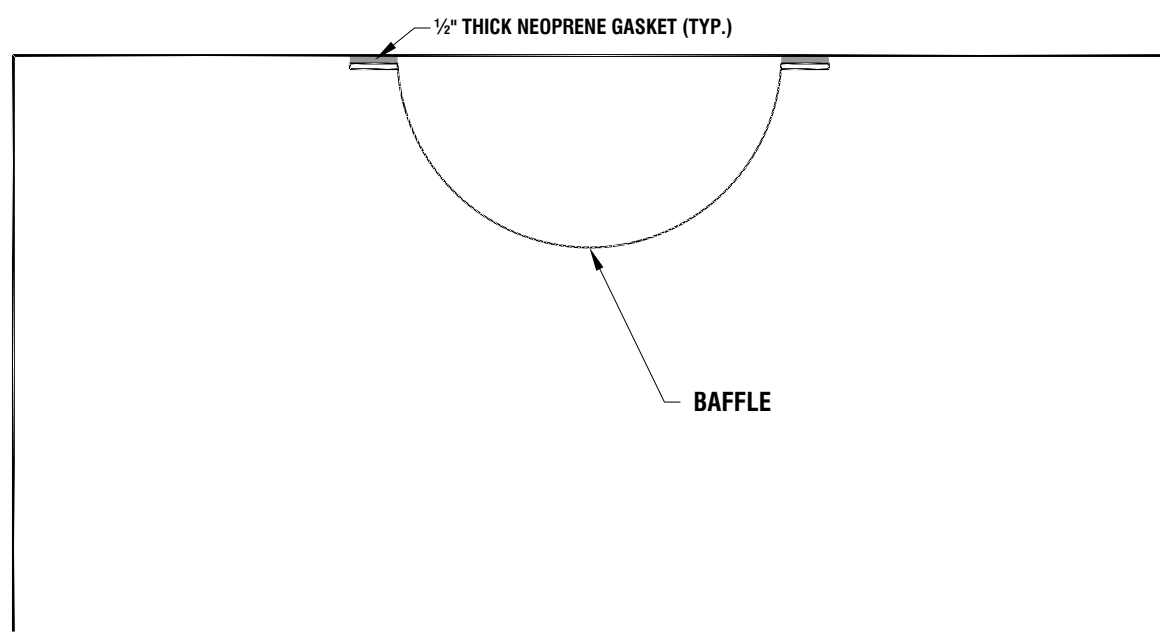


STRUCTURE #	BAFFLE DIA. (D)	BAFFLE HT. (H)	# REQ.
D-5 (E)	21"	21"	1
D-5 (SW) *	21"	34"	1
D-5 (W)	21"	21"	1

* INVERTED BAFFLE



ROUND WALL



FLAT WALL

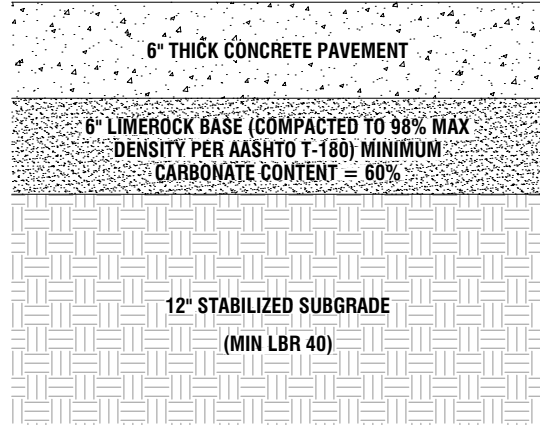
BAFFLE DETAILS
N.T.S.

NOTES:

- ALL BAFFLES SHALL BE MADE FROM ONE HALF OF A CORRUGATED ALUMINUM PIPE.
- TOP OR BOTTOM PLATES SHALL BE CONTOURED TO FIT STRUCTURES.
- BAFFLES LARGER THAN 30" DIAMETER SHALL HAVE 3 SUPPORTS ON EACH SIDE.
- MID WELDS ARE ACCEPTABLE IF ANNULAR PIPE IS UTILIZED.
- BAFFLE TO BE SUPPLIED WITH 1/2"x2" NEOPRENE GASKETS UNLESS REQUESTED OTHERWISE.
- INVERTED BAFFLE (OVERFLOW WEIR) HAS PLATE WELDED TO BOTTOM WITH OPEN TOP.

INSTALL LIMEROCK BASE IN MAXIMUM 4" LIFTS

USE BASALT FIBER REINFORCED CONCRETE
(NO FIBER REINFORCING FOR CONCRETE POURS WITHIN PUBLIC RIGHT-OF-WAY)



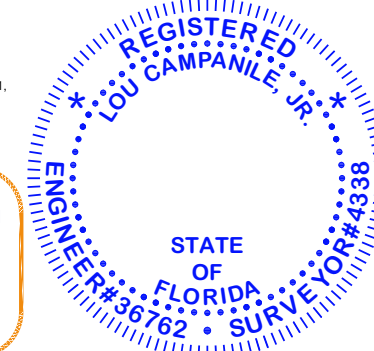
TYPICAL CONCRETE PAVEMENT SECTION

N.T.S.

Lou Campanile

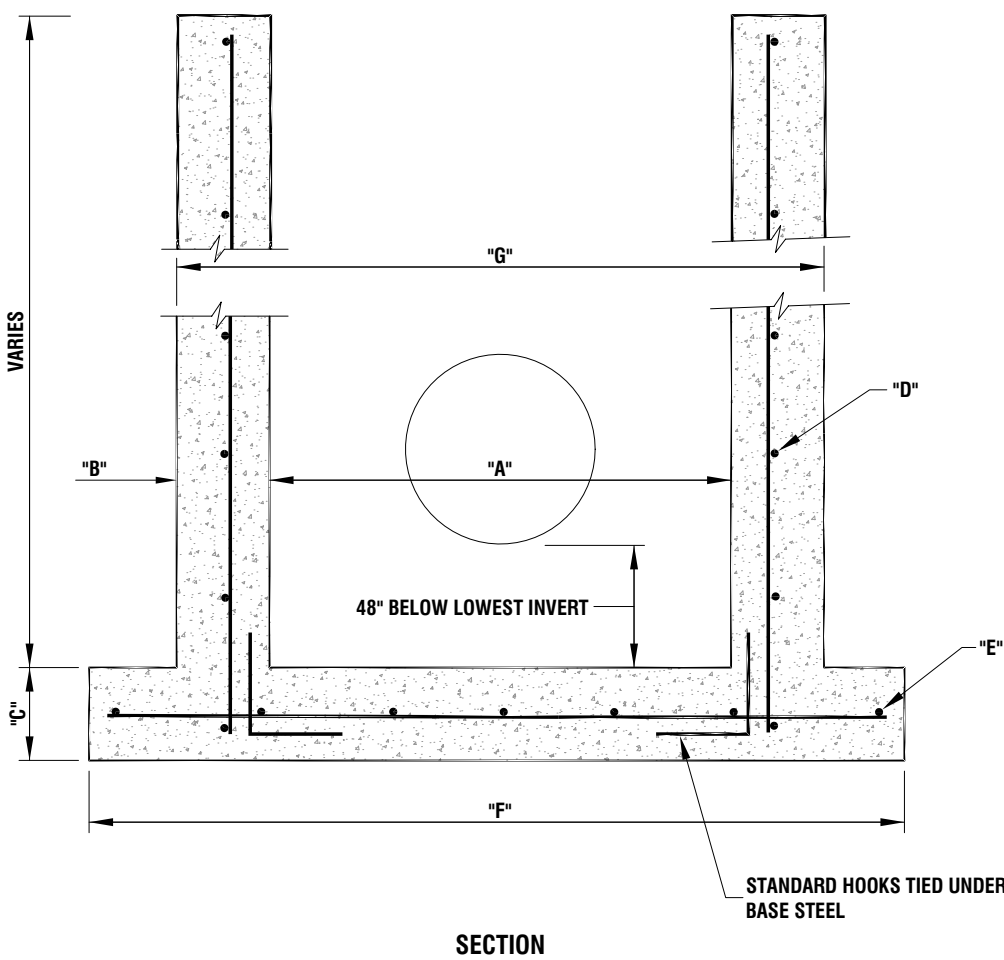


This item has been digitally signed and sealed by Lou Campanile, Jr., P.E., P.L.S., on the date and time shown in his digital signature.
Printed copies of this document are not considered signed and sealed and the digital signature must be verified on any electronic copies.



CAMPANILE & ASSOCIATES, INC.
ENGINEERS PLANNERS SURVEYORS
6420 MAHI DRIVE
CORAL GABLES, FLORIDA 33158-1841
TEL: (305) 971-1988
LB 1678

10/9/24
Lou Campanile, Jr.
Professional Engineer No. 38792
Professional Surveyor No. 4338
State of Florida

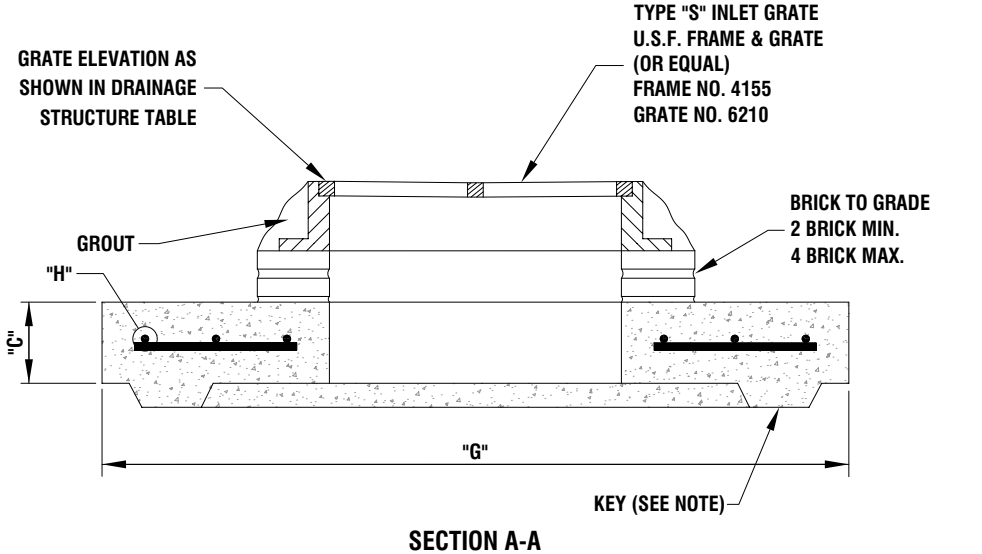


TYPE	"A"	"B"	"C"	"D"	"E"	"F"	"G"	"H"
4" I.D.	4'-0"Ø	8"	8"	#4 @ 12" C.C.E.W.	#4 @ 12" C.C.E.W.	6'-4"Ø	5'-4"Ø	#4 @ 6" C.C.E.W.
5" I.D.	5'-0"Ø	8"	8"	#5 @ 12" C.C.E.W.	#5 @ 12" C.C.E.W.	7'-4"Ø	6'-4"Ø	#5 @ 8" C.C.E.W.
6" I.D.	6'-0"Ø	8"	10"	#5 @ 12" C.C.E.W.	#5 @ 8" C.C.E.W.	8'-4"Ø	7'-4"Ø	#5 @ 6" C.C.E.W.

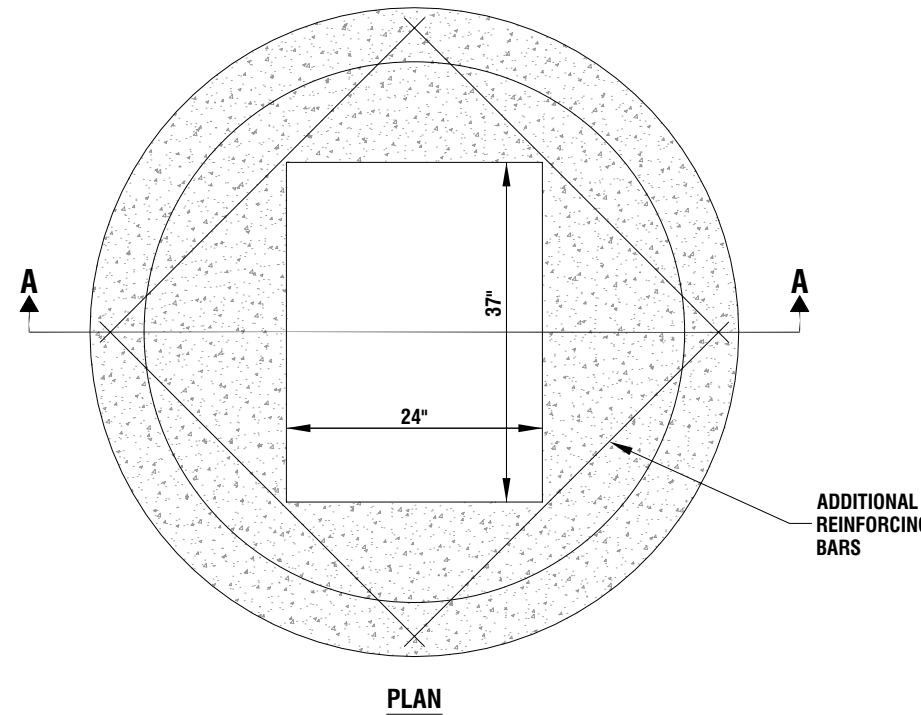
GENERAL NOTES:

- BEVELED EDGES: ALL EXPOSED EDGES AND CORNERS TO BE CHAMFERED 3/4".
- FOUNDATION MATERIAL: WHERE MATERIAL UNSATISFACTORY FOR FOUNDATION IS ENCOUNTERED AT FLOW LINE, DIRT FLOOR AND CARRY WALLS DOWN TO SATISFACTORY FOUNDATION, BACKFILL TO FLOW LINE WITH CLEAN SAND.
- DETAILS IN ACCORDANCE WITH DRAWING No. 102 & 103 U.S. PRECAST CORP.
- CONNECTING PIPES NOT TO EXCEED 2" INSIDE STRUCTURE.
- SEE ABOVE FOR STRUCTURE TOP DETAIL. TYPE "T" TOP REFERS TO OFFSET OPENING (USED FOR LARGE DIAMETER STRUCTURES) AND TYPE "D" TOP REFERS TO CENTERED OPENING.
- TYPE "G" INLET GRATE REFERS TO CURB OPENING GRATE AND TYPE "S" INLET GRATE REFERS TO PAVEMENT OR SWALE GRATE.

TYPICAL DRAINAGE STRUCTURE DETAIL
N.T.S.



TYPE "T" STRUCTURE TOP SHOWING
TYPE "S" INLET GRATE

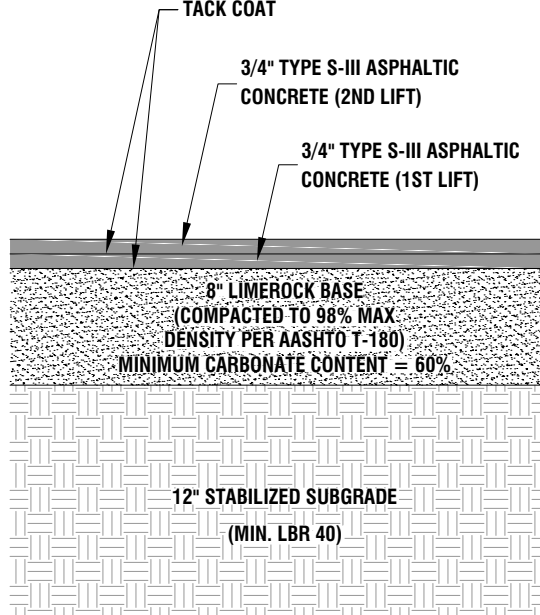


TYPE "D" STRUCTURE TOP
(CENTERED OPENING)

KEY NOTE:

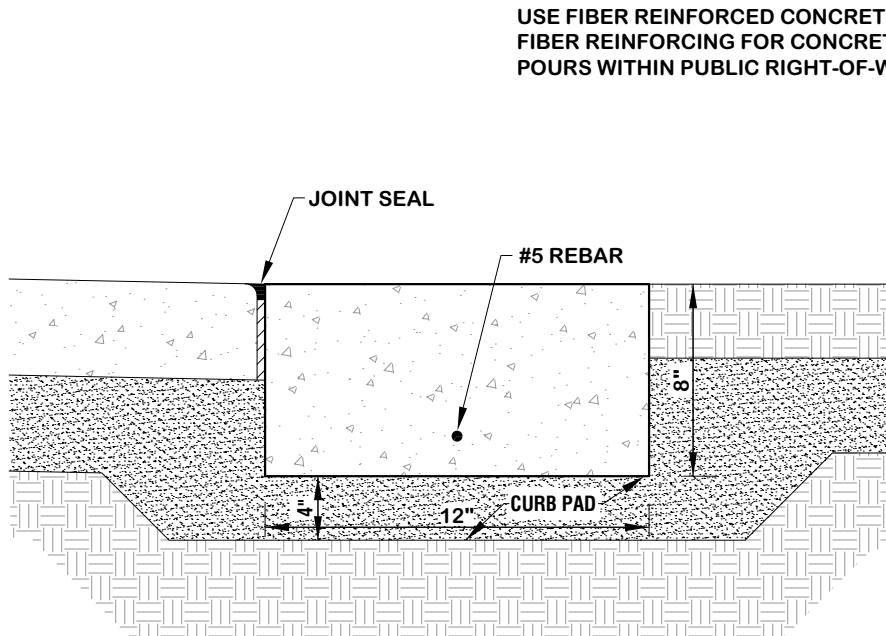
KEY CUT IS REQUIRED W/PRECAST TOPS ONLY. IF TOP SLAB IS CAST IN PLACE, USE No. 4-12" LONG BARS EQUALLY PLACED TO SECURE TOP SLAB TO SIDE WALLS.

INSTALL LIMEROCK BASE IN MAXIMUM 4" LIFTS

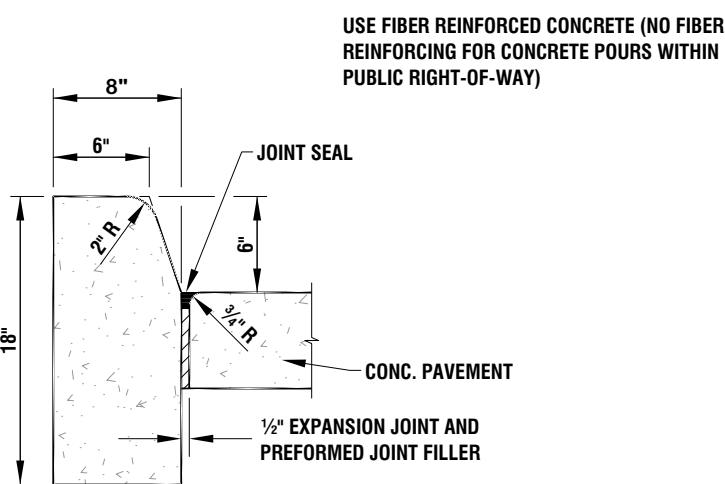


TYPICAL ASPHALT PAVEMENT SECTION

N.T.S.



12" CONCRETE HEADER CURB
N.T.S.



NOTE: FOR USE ADJACENT TO CONCRETE OR FLEXIBLE PAVEMENT, CONCRETE SHOWN, EXPANSION JOINT, PREFORMED JOINT FILLER AND JOINT SEAL ARE REQUIRED BETWEEN CURBS AND CONCRETE PAVEMENT ONLY.

TYPE D CONCRETE CURB

N.T.S.



REFLECTIVE BLUE BACKGROUND W/
REFLECTIVE WHITE SYMBOL AND BORDER

REFLECTIVE WHITE BACKGROUND W/ BLACK
OPAQUE LEGEND & BORDER, 1" HIGH
LETTERS

(NOTE: \$250.00 FINE)

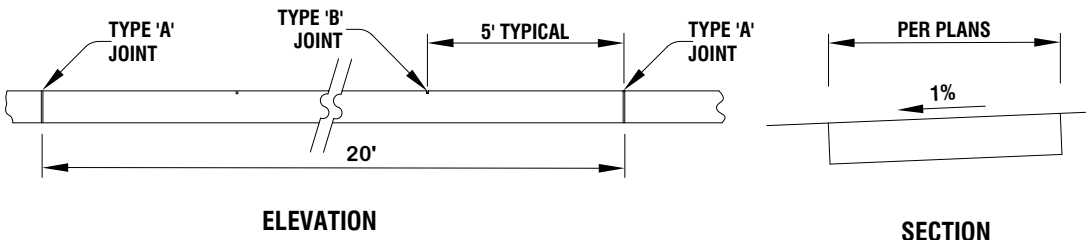
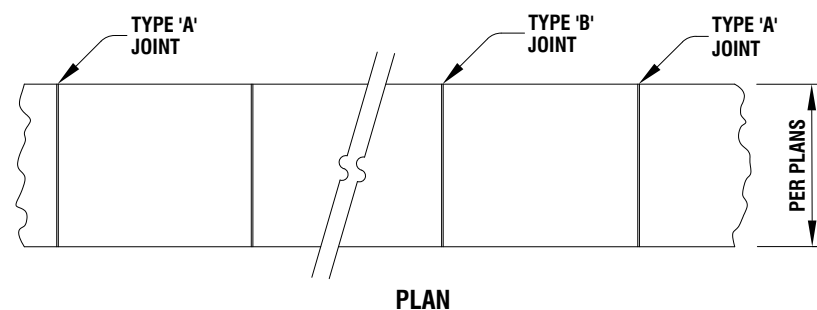
7 FT FROM BOTTOM OF SIGN TO
FINISHED GRADE BELOW

HANDICAP PARKING SIGN

2" = 1'-0"

THIS DETAIL APPLIES TO ONSITE SIDEWALK ONLY.

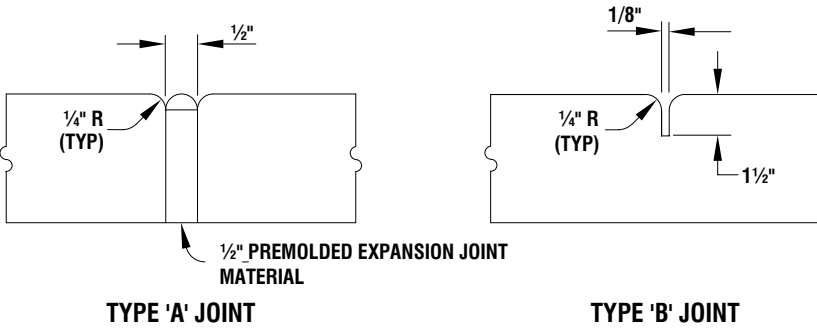
USE FIBER REINFORCED CONCRETE (NO FIBER
REINFORCING FOR CONCRETE POURS WITHIN
PUBLIC RIGHT-OF-WAY)



NOTE:
SIDEWALK SHALL BE 6" THICK

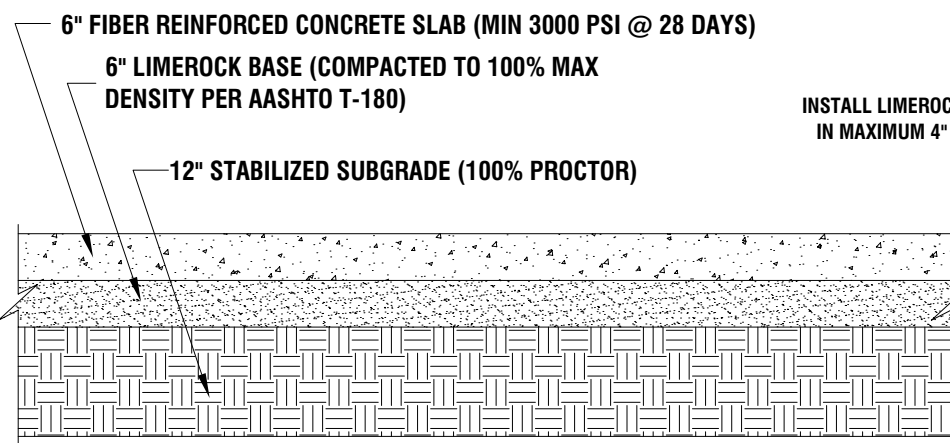
SIDEWALK DETAIL

N.T.S.



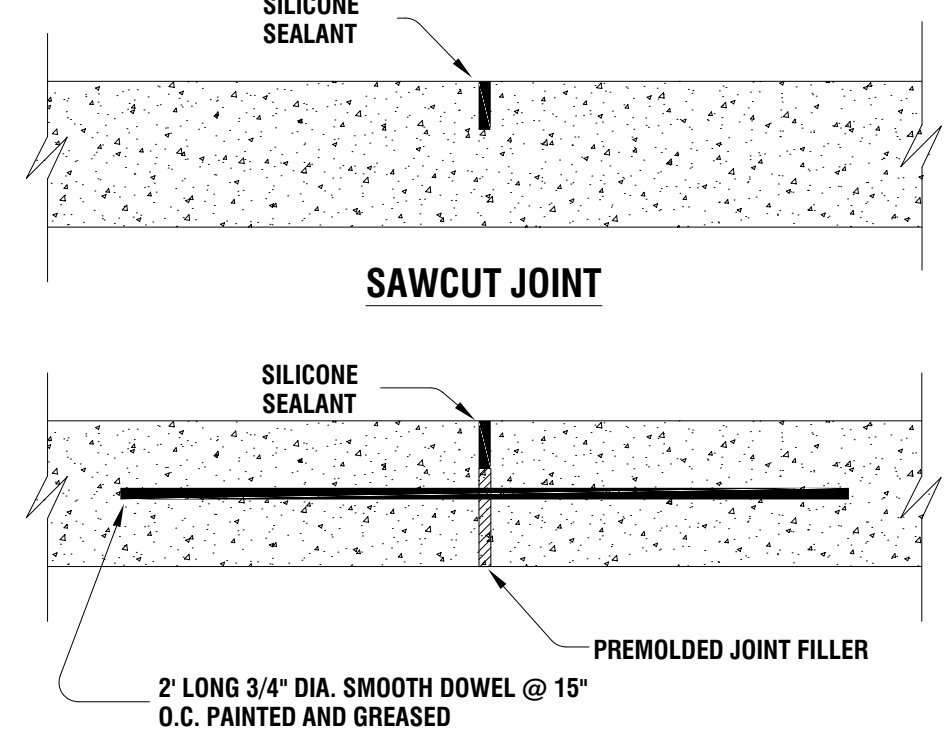
SIDEWALK JOINTS

N.T.S.



CONCRETE PAVEMENT

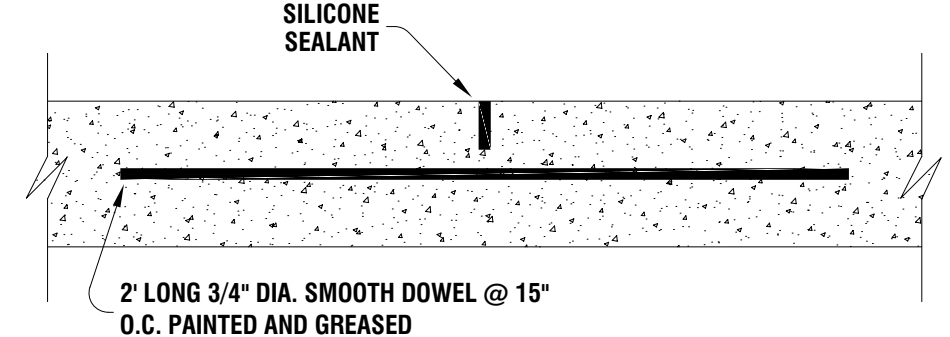
N.T.S.



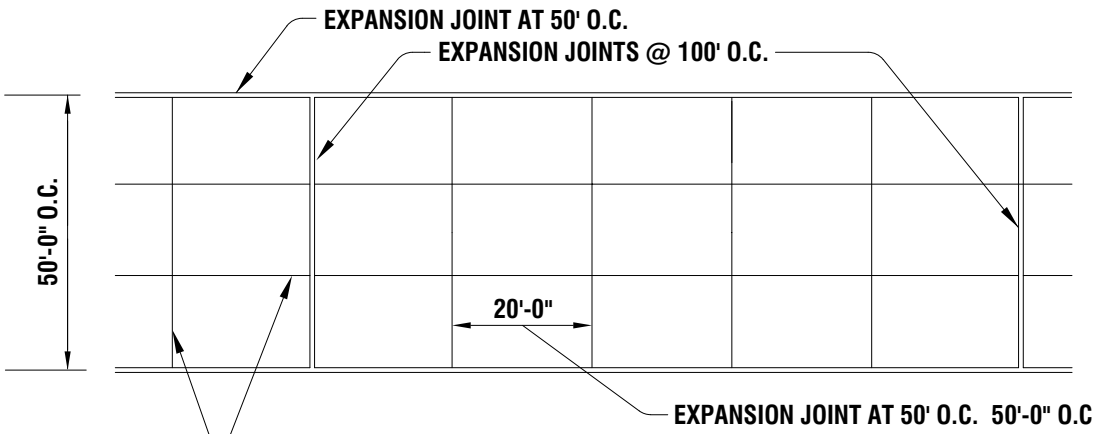
SAWCUT JOINT

2' LONG 3/4" DIA. SMOOTH DOWEL @ 15"
O.C. PAINTED AND GREASED

EXPANSION JOINT



CONSTRUCTION JOINT



CONCRETE PAVING JOINT DETAILS

N.T.S.

NOTE:
DOWEL BARS SHALL BE HELD IN PLACE BY BAR SUPPORT ASSEMBLY. PROVIDE EXPANSION JOINT WHERE CONCRETE, CURB AND GUTTER MEET.

CONCRETE PAVING JOINT DETAILS

N.T.S.

for
RJS ARCHITECTS, INC.

ELIAS APARTMENT BUILDING
216 SE 23 AVENUE
POMPANO BEACH, FLORIDA 33062-5304
PAVING, GRADING & DRAINAGE NOTES & DETAILS

PROJECT NO. 5391
DATE 10/9/24
REVISIONS

DRAWING
PAGE 5
SHEET 5 OF 12

PZ24-12000023

12/18/2024